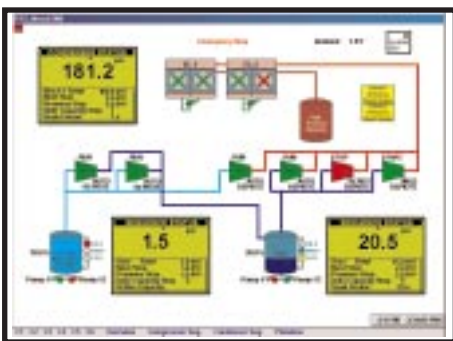
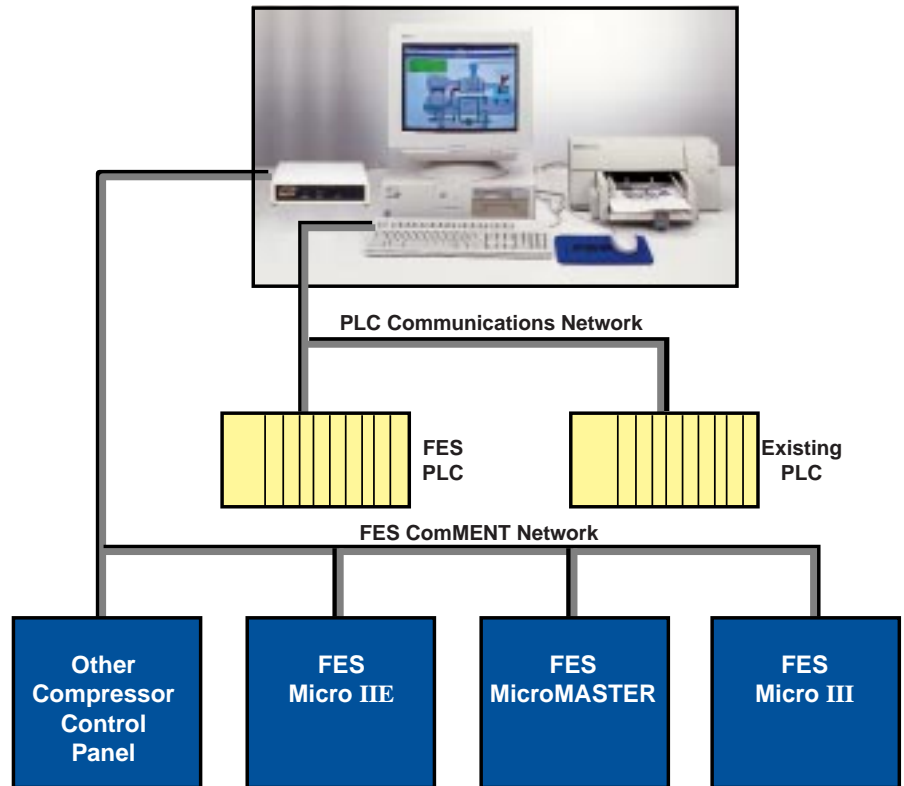


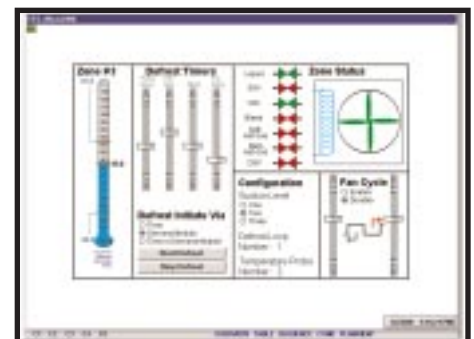
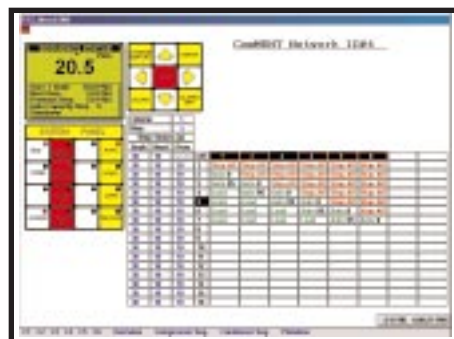
# MicroLINK PC-Based Supervisory System

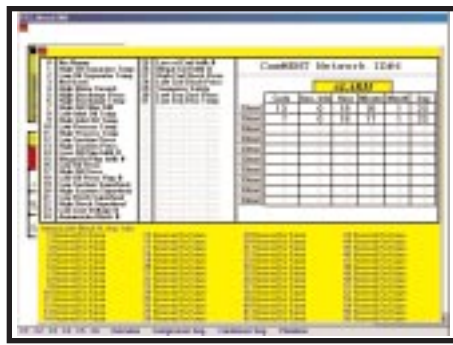
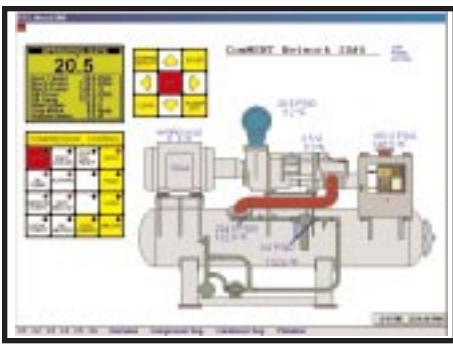
FES' MicroLINK provides a single workstation for operators, technicians and engineers to access plant-wide information and initiate setpoint and operational changes through serial communications with any combination of FES microprocessor panels, FES PLC (Programmable Logic Controller) panels and even PLC and other manufacturers' compressor control panels already existing at your facility.



## Performance Feature—Customized Graphics

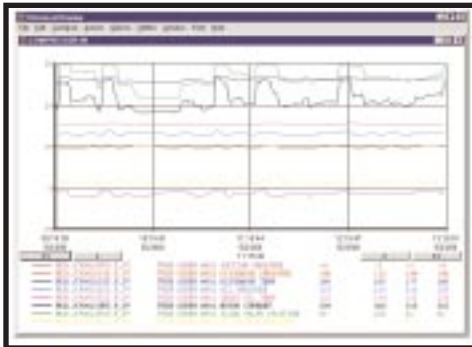
FES engineering will use your facility's P&ID and plan view drawings to generate custom graphic displays that accurately pictorialize the refrigeration system. System "overview" displays provide operators with a quick synopsis of the current operation of the system. More detailed displays provide operators access to setpoint adjustments, control mode changes, and detailed alarm information. All displays are conveniently accessed through easy to use pull-down menus or pointer selection.





## Performance Feature—Complete Compressor Panel Data

FES MicroLINK is not limited to compressor analog data like many other supervisory systems. FES provides an accurate and continually updated representation of the display of the compressor panel that is familiar to the operator. The keypad and its control functions are accessible with the mouse. Detailed alarm and prealarm information is provided. And all parameter, prealarm and panel setup information can be displayed and modified.



## Performance Feature—Historical Data

An unlimited number of user definable trends can be created with up to 8 data pens per chart and a time window from a few seconds to a few months. The MicroLINK also keeps daily alarm message history files and daily tracking message files recording password entries and setpoint changes.

## Other Performance Features

- Advanced reporting capabilities allow for :
  - customized Microsoft EXCEL reports including real-time and historical data
  - print screens of graphic displays
  - tabular time-stamped listing of historical data
- Networking via ethernet or token ring of multiple PC's allows for sharing of MicroLINK data and displays at other locations.
- Password security allows for multiple security levels with log on and log off features.
- Off-site access to all MicroLINK functions through a high speed modem and remote monitoring software installed on each system.



## Investment Protection

- FES' MicroLINK uses Intellution's FIX software for Windows 95 or NT. Use of this world leading HMI software package avoids the inflexibility and future support problems of proprietary packages and ensures that the software is bug-free and feature-filled.
- FES' supply of a development license allows the system to be expanded by FES or others.
- Easy expansion can be provided for communications to new or other controllers in you facility (for refrigeration and non-refrigeration functions).
- MicroLINK's are serviceable through FES' large support staff and standard features including modem interface, magnetic tape backup unit for hard-drives, built-in communications diagnostics software and immediate indication of communications failures.
- FES provides complete operational documentation and drawings customized to your system for present and future training requirements.